

**Core Creations Interior Decoration LLC  
&  
Core Creations Contracting LLC**

**Company Profile**

# INTERIOR TURNKEY SOLUTIONS

Office Fitout, Retail Outlets,  
Restaurants, Cafes & Hotel Apartments

## *Our Sister Concerns :*

♦ *Core Creations Contracting L.L.C*

♦ *New way Electromechanical Contracting Co. L.L.C*

# CONTENTS

Company Overview

Core Value + Commitment

Work Ethics

Services

Projects

Company Divisions

Certifications

Clientele

Contact Us

# COMPANY OVERVIEW

Core Creations Interior Decoration LLC, was established in 2012 to provide interior design services of exceptional quality ranging from fit out, electro- mechanical, joinery, metal, and furniture works. Our services include design and execution of turnkey projects with Client satisfaction being top priority for us. We have a professional team comprising of architects and engineers, who are continuously focused and committed to achieve excellence and success.

At Core Creations, it is our mission to go the extra mile and work through numerous unforeseen challenges in order to help Clients see their vision turn to reality. Our success story has been built on a commitment to working together and share knowledge with our Clients to deliver quality solutions that accelerate the success of our projects.

We provide the following specialized services:

**Interior designs, Fit-out, MEP, Metal works, Turnkey Interiors, Joinery Works**

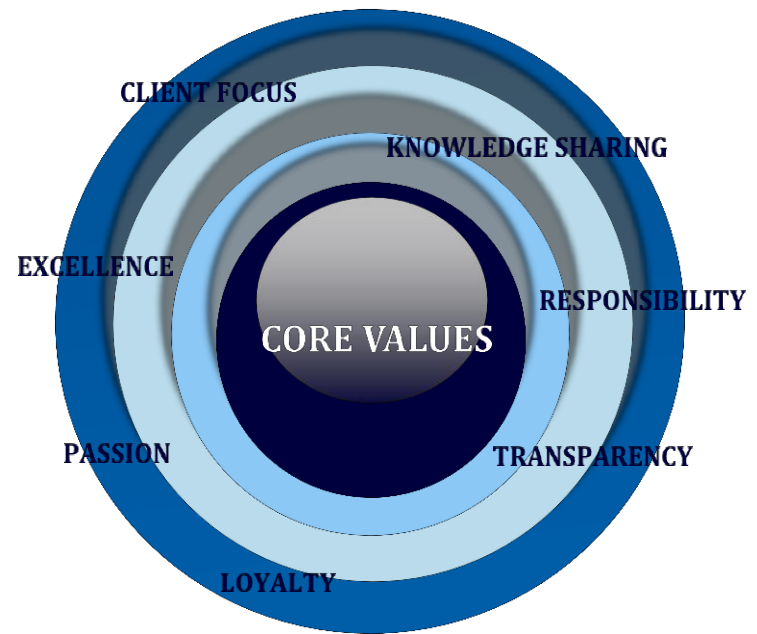


# OUR CORE VALUES

Using these core values, we strengthen our vision for the future and drive a positive culture.

In today's competitive world, with design scenes rapidly developing for both residential and commercial areas, we at Core Creations strive to differentiate our designs by building spacious and exclusive office spaces with an aim to retain the aesthetic and historical aspects of the vicinity. We are continuously evolving by incorporating cutting edge technology and latest innovation in design comfort. We are committed to learning both what is desired and more importantly what is required to create a positive quality of life.

As part of our commitment to you, we incorporate feasibility into the vision and values of the organization we work with. We try and minimize usage of water, energy and other consumables during our works and have proper guidelines for recycling as well as waste management. Our selection of key suppliers undergoes a stringent procurement process in order to ensure they comply with our vision and standard.



# OUR WORK ETHICS

Core Creations Interiors is dedicated to providing sustainable fit-out solutions by ensuring environmental, social and economic parameters form part of our services to our Clients.

**HONESTY:** We act with honesty and avoid conflict, likely to result, directly or indirectly, from deception.

**FAIRNESS:** We do not seek to obtain any benefit arising from unfair systems.

**RELIABILITY:** We provide skills and services of highest standards.

**INTEGRITY:** We have high regard for public interest, particularly parties who may use or express future interest in the project.

**OBJECTIVITY:** Identify potential conflict of interest, resolve and create awareness to parties likely to be affected.

**ACCOUNTABILITY:** Communicate relevant information and/or warning of issues in a transparent manner, ahead of time to allow for corrective measures.

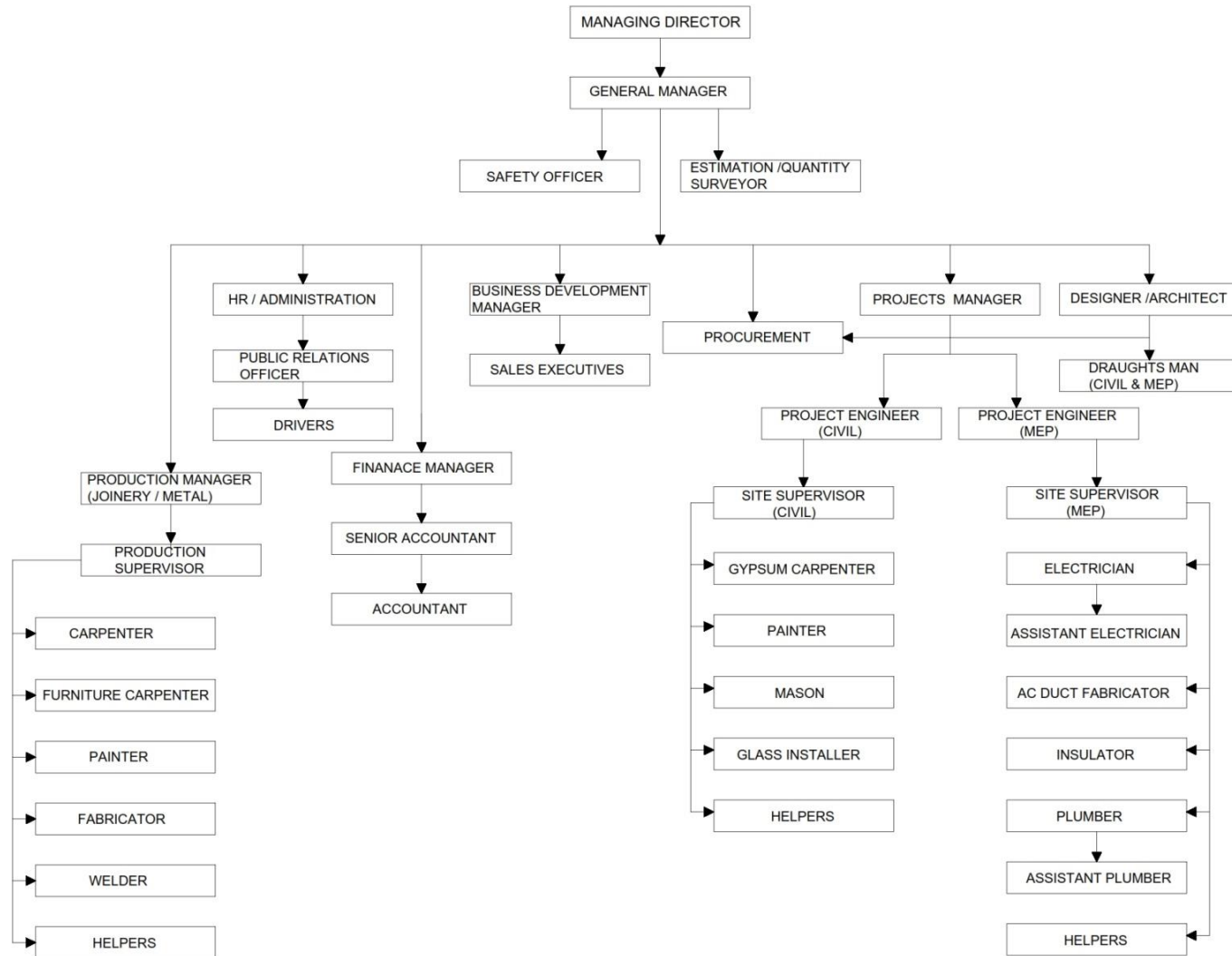


# OUR SERVICES

We undertake turnkey projects to include Interior Design, Civil and MEP works, Joinery, metal, IT, Security, Access Control solutions and Glazing works. We are also flexible to include any additional works as requested by the Client with an assurance that any subcontracted works will be of highest standards



# Core Team : Organizational Chart



# CC Interiors: Manpower List

## **TOP MANAGEMENT:**

MANAGING DIRECTOR - 1

GENERAL MANAGER – 1

## **FINANCE DEPARTMENT**

FINANCE MANAGER – 1

SENIOR ACCOUNTANT – 1

ACCOUNTANT – 1

## **DESIGNS DEPARTMENT:**

DESIGNER / ARCHITECT - 2

## **ESTIMATION DEPARTMENT:**

ESTIMATORS - 2

QUANTITY SURVEYORS - 2



## **PROJECTS DEPARTMENT:**

Project Manager - 3

### **CIVIL SECTION:**

PROJECT ENGINEER - 2

SITE SUPERVISOR - 2

GYPSUM CARPENTER - 10

PAINTER - 8

MASON - 6

GLASS INSTALLER - 5

HELPERS – 15

### **MEP SECTION:**

PROJECT ENGINEER - 4

SITE SUPERVISOR - 2

ELECTRICIANS – 6

ASSISSTANT ELECTRICIAN - 4

AC DUCT FABRICATOR - 3

INSULATOR – 3

PLUMBER - 2

# CC Interiors: Manpower List

ASSISSTANT PLUMBER - 2  
HELPERS – 10

## **JOINERY & METAL DIVISION:**

PRODUCTION MANAGER - 1  
PRODUCTION SUPERVISOR - 2  
CARPENTER - 5  
FURNITURE CARPENTER - 7  
PAINTER - 5  
FABRICATOR - 4  
WELDER - 3  
HELPERS – 7

## **JOINERY & METAL DIVISION:**

PRODUCTION MANAGER - 1  
SUPERVISOR - 2  
CARPENTER - 4  
FURNITURE CARPENTER - 12  
PAINTER - 2  
FABRICATOR - 8  
HELPERS – 10

# CC Interiors: Manpower List

## **RISK & SAFETY DEPARTMENT**

SAFETY OFFICER - 1

## **BUSINESS DEVELOPMENT DEPARTMENT:**

BUSINESS DEVELOPMENT MANAGER - 1

SALES EXECUTIVES – 4

## **HR DEPARTMENT:**

HR & ADMINISTRATION MANAGER - 1

PUBLIC RELATIONS OFFICER – 1

## **PROCUREMENT DEPARTMENT:**

PROCUREMENT OFFICER – 2

## **TRANSPORTATION:**

DRIVERS - 5

# PRESTIGIOUS PROJECTS



RETAIL OUTLETS









# BANK OF CHINA - ABU DHABI





# TYPICAL DUTCH - RESTAURANT







# PROJECTS - Residential

## RICHMOND HOTEL APARTMENTS



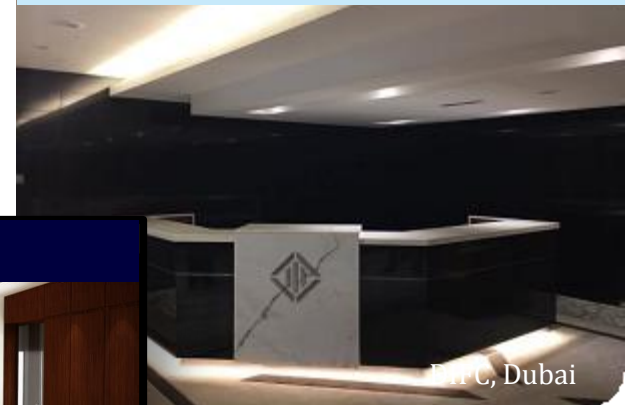


# PROJECTS - Offices

## DUBAI MERCANTILE EXCHANGE



## DUBAI INTL FINANCIAL CENTRE



## BRUNSWICK



## PROPERTY YOURS



## ELTIZAM



# PROJECTS - Offices

ICBC- ABU DHABI



NEW BUSINESS CENTER - DIFC



# PROJECTS - Offices

**REED SMITH**



DIFC, Dubai

**NEW BUSINESS CENTRE**



DIFC, Dubai

**ZURICH INSURANCE**



DIFC, Dubai

**MC GRAW HILL**



Media City, Dubai

**ADCB**



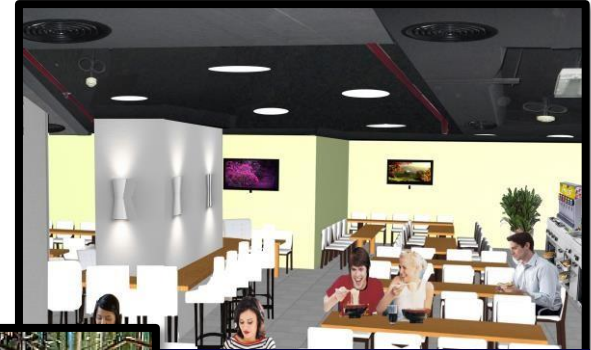
Abu Dhabi



# PROJECTS - Restaurants



RUKN AL HAS SHARJAH



WAHA ADDRESS HOTEL



GAUCHO, DIFC



JASHAN DUBAI



HOWARD JOHNSON DUBAI

# PROJECTS - Hospitals

UNIVERSAL HOSPITAL, ABUDHABI





# PROJECTS – Retail Outlets



# DESIGN WORKS





# DESIGN WORKS



# DESIGN WORKS



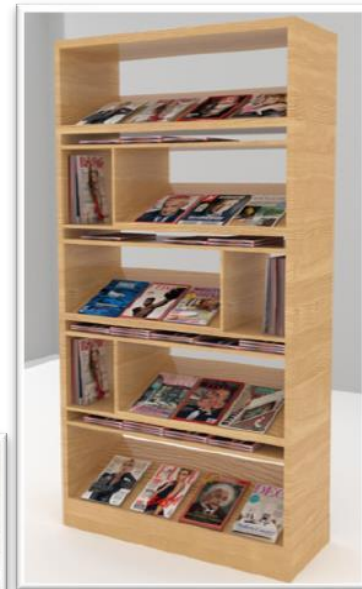


# Core Joinery Works

Core Joinery Works is one of the divisions of Core Creations Interiors to provide quality joinery and furniture works.











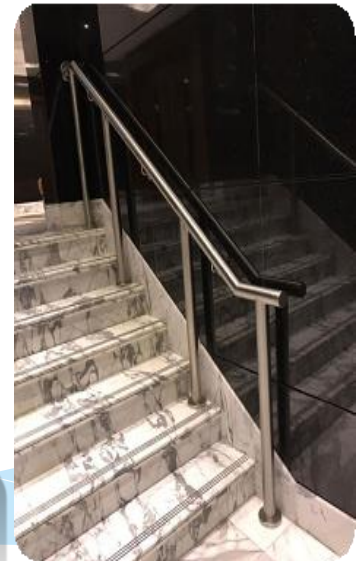


# Core Metal Works

Core Metal works is one of the divisions of Core Creation Interiors to provide quality steel structure frames and cladding works.







## Core Creations Metal & Joinery Warehouse







## Core Creations – Annual Day Celebration





## Core Creations – Annual Day Celebration



## COMPANY LICENSE & VAT CERTIFICATE

[illegible]

الهئية الاتحادية للضرائب  
FEDERAL TAX AUTHORITY

شهادة تسجيل لضريبة القيمة المضافة في الامارات العربية المتحدة  
Certificate of Registration for Value Added Tax in the United Arab Emirates

تشهد الهيئة الاتحادية للضرائب أن الجهة التالية مسجلة لضريبة القيمة المضافة في الامارات العربية المتحدة  
The Federal Tax Authority certifies that the entity below is a registered person for Value Added Tax in the UAE

Full Arabic legal name  
Full English legal name  
Registered address  
Tax Registration Number  
Effective Registration Date  
First VAT Return Period  
VAT Return due date  
Start and end dates of Tax periods:  
Please check that the details on this certificate are correct. You must inform the Federal Tax Authority of any change on the basis of which you obtained your Tax Registration Number.

كوكريشيمير لأعمال تجميل المصمم الداخلي ش.م.ع  
Core Creations Interior Decoration LLC  
Lake Center Tower, Office # 507, Business  
Bay, Dubai, United Arab Emirates  
391465, +97144210694  
100320565100003  
01/01/2018  
1 Jan 2018 - 30 April 2018 and quarterly  
thereafter  
28th day following the end of the VAT return  
period  
1 Feb to 30 Apr, 1 May to 31 July, 1 Aug to 31  
Oct, 1 Nov to 31 Jan  
رقم التسجيل الضريبي  
تاريخ التسجيل الضريبي  
فترة أول إقرار لضريبة القيمة المضافة  
تاريخ استحقاق إقرار ضريبة القيمة المضافة  
بداية ونهاية الفترات الضريبية

17/01/2018

تاريخ الإصدار

# CERTIFICATION- Recognition





# List of Main Finished Projects

## Core Creations - List of Main Projects

Project	Nature of work	Project Cost in AED
<b>Offices</b>		
Industrial & Commercial Bank Of China	Fitout	1,450,000.00
Mitsubishi Corporation	Fitout	3,045,564.00
DIFC Business Centre	Fitout	1,606,840.00
Bank of China	Fitout	2,152,000.00
Tamouh office	Fitout	1,785,000.00
Zurich	Fitout	375,000.00
Brunswick	Fitout	660,633.00
Mitsui	Fitout	250,000.00
AIG	Fitout	325,600.00
Eltizam Office	MEP	903,868.00
Albatha trading - Abudhabi	Modification	304,323.00
Omega Office	Fitout	465,452.00
EHAf Consulting Engineers	Fitout	265,000.00
Ocean Light General Maintenace	Fitout	182,000.00
GHRDC	Fitout	566,137.00
Tafawuq Office	Fitout	608,200.00
MC Corporation - DIFC	Fitout	360,550.00
ICBC GV01 level 01	MEP	278,742.00
Bloomberg	Modification	272,125.00
RBS	Modification	393,250.00
<b>Retail Outlets &amp; Restaurants</b>		
7 Eleven - Al Mamoura	Fitout	716,100.00
7 Eleven - Al Falah	Fitout	529,159.00
7 Eleven - Emic Standalone	Fitout	540,552.00
7 Eleven - Hazza Bin Zayed Stadium	Fitout	792,303.00
7 Eleven - Mirchi Zarooni	Fitout	556,276.00

## Core Creations - List of Main Projects

Project	Nature of work	Project Cost in AED
<b>Retail Outlets &amp; Restaurants</b>		
7 Eleven - Arcade	Fitout	590,256.00
7-Eleven - Fairmont Fujairah	Fitout	692,920.00
7-Eleven, Sultan Business Center	Fitout	575,227.00
7-Eleven, Metro Bldg. @ Al Barsha	Fitout	790,125.00
7-Eleven, Iris Bay	Fitout	710,654.00
7-Eleven, Cluster - D @ JLT	Fitout	654,407.00
Caribou Coffee Shop	MEP	450,000.00
Typical Dutch	Fitout	559,440.00
Waha Address Hotel	Fitout	720,521.00
GAUCHO DIFC	MEP	225,000.00
Howard Johnson	MEP	341,400.00
Jashan Dubai	MEP	328,000.00
Richmond Hotel	Modification	205,600.00
<b>Hospitals &amp; Clinics</b>		
Aster Hospital & Pharmacy	Modification	551,560.00
Universal Hospital	Fitout	6,012,500.00
Medcare Hospital	Modification	224,000.00
Al Yousuf Clinic	Fitout	2,700,000.00
Health Plus Clinic	Fitout	1,200,000.00
<b>Residential Apartments</b>		
Nurai Island Villas	Fitout	4,502,500.00
Thiara Apartments 1102	Modification	340,000.00
Diamond Villa Palm Jumeirah	Modification	305,000.00
Horizon tower gym	Fitout	477,865.00
Oceana Apartments 1201	Modification	165,000.00
Muralis Apartment - JLT	Modification	120,000.00



# CLIENTELE



# CLIENTELE



# CONTACT DETAILS

## **Core Creations Interior Decoration LLC**

PO Box 391465

Unit No.2F-A-05, Empire Heights Tower-A  
Business Bay, PO Box: 391465

Dubai- UAE

Tel: +971-4210694

Fax: +971-4210695

Email: [info@corecreationsinteriors.com](mailto:info@corecreationsinteriors.com)

**Mr. SIVIN FRANCIS**

GENERAL MANAGER

MOB: +971 55 8272023

Email: [sivin@corecreationsinteriors.com](mailto:sivin@corecreationsinteriors.com)

